	SIMPLIFIED SPECIFICATION	Rev.	0.0
		Date of Issued	18 July. 2012
		Date of revision	18 July. 2012
SPB273439(Rechargeable Lithium Ion Battery)		Page	1 / 3

SPECIFICATION OF PRODUCT

Rechargeable Lithium Ion Battery

Model : SPB273439

(Grade : A1)


ENERTECH INTERNATIONAL, INC.

269, Chungjuhosu-ro, ChungJu-city, Chungbuk , Korea

TEL: 82-43-850-1950 FAX: 82-43-855-9175

www.enertechint.com

	Issued	Checked	Approved
ENERTECH INTERNATIONAL, INC.	<div style="border: 2px solid blue; padding: 5px; display: inline-block;"> Electronic Approval </div>		
Date			

	SIMPLIFIED SPECIFICATION	Rev.	0.0
		Date of Issued	18 July. 2012
		Date of revision	18 July. 2012
SPB273439(Rechargeable Lithium Ion Battery)		Page	2 / 3

1. Scope

This specification defines the characteristics of a rechargeable lithium ion battery manufactured by **ENERTECH INTERNATIONAL INC.**


2. Description and Model

2.1 Description Cell (Rechargeable Lithium ion Battery)

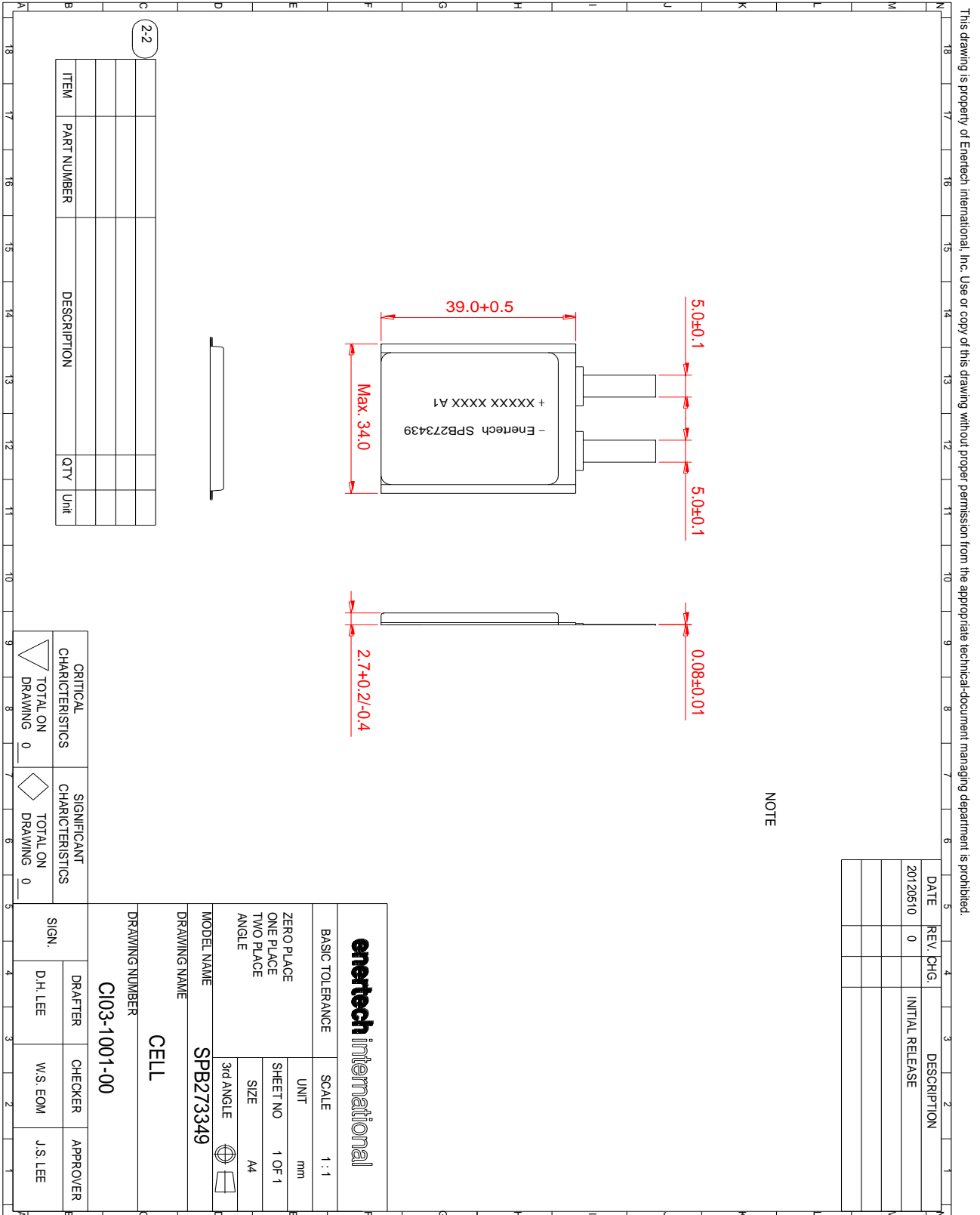
2.2 Model SPB273439

3. Nominal Specifications

Item		Specification
3.1 Nominal Capacity		350 mAh(0.2C discharge)
3.2 Energy density	Volumetric	362 Wh/L
	Gravimetric	190 Wh/Kg
3.3 Nominal Voltage		3.7V
3.4 Operating Voltage Range		3.00V ~ 4.20V
3.5 Standard	Charge Current	175mA (0.5C)
	Discharge Current	70mA (0.2C)
3.6 Maximum	Charge Current	350mA (1.0C)
	Discharge Current	700mA (2.0C)
3.7 Operating Temperature	Charge	0°C ~ 45°C
	Discharge	-20°C ~ 60°C
3.8 Storage Temperature	0°C ~ 25°C	≤ 1 Year
	0°C ~ 40°C	≤ 3 Month
	-10°C ~ 50°C	≤ 1 Month
3.9 Storage Humidity		45~85%RH
3.10 Cell size	Thickness	2.7 +0.2/-0.4mm (Initial fully charged Cell)
	Width	Max 34.0mm
	Length	39.0 +0.5/-0.0mm
3.11 AC Impedance		Max. 100mΩ
3.12 Weight		Max. 6.8g

	SIMPLIFIED SPECIFICATION	Rev.	0.0
		Date of Issued	18 July. 2012
		Date of revision	18 July. 2012
SPB273439(Rechargeable Lithium Ion Battery)		Page	3 / 3

◆ **Out view drawing for SPB273439**



NOTE