

	<b>PRODUCT SPECIFICATION</b>	Rev.	1.0
		Date	2012.04.02
<b>Li204SX-6600 (Rechargeable Li-ion Battery Pack 3P3S, 6600mAh)</b>		Page	Sheet 1 of 3

## SPECIFICATION OF PRODUCT

**Rechargeable Li-ion Battery Pack**  
**Model : Li204SX-6600 (10.8V, 6600mAh)**

### ENERTECH INTERNATIONAL, INC.

710-3, Yongtan-Dong , Chung-Ju , Chung-buk , Korea  
 TEL: 82-43-850-1840 / 82-2-3457-8650    FAX: 82-2-564-3566

[www.enertechint.com](http://www.enertechint.com)

## 1. Descriptions

1.1 Description Rechargeable Lithium ion battery pack

1.2 Battery Cell Configuration 3P-3S

## 2. Electrical specification(@25 °C)

Item	Specification	Remarks
2.1 Capacity	6600mAh	Nominal (by standard charge and discharge)
	6450mAh	Minimum
2.2 Voltage	10.8V	Nominal
2.3 Charging method	CC-CV	Constant-voltage with limited current
2.4 Charging voltage	12.6±0.05V	
2.5 Charging current	3300mAh	Standard
2.6 Charging current cut-off	< 330mA	
2.7 Discharging current	1320mAh	Standard
	3300mAh	Maximum
2.8 Discharge cut-off voltage	9.0V	
2.9 Internal resistance	< 300mΩ	
2.10 Operating temperature	0 to 40°C	Standard charge
	-20 to 55°C	Standard discharge
2.11 Storage temperature	0 ~ 25°C	≤ 1 Year
	0 ~ 45°C	≤ 3 Months
	0 ~ 60°C	≤ 1 Month
2.12 Storage humidity	20 ~ 85 % RH	Not condensed
2.13 Smart Module Communication	SMBus	Type
	v1.1	Revision

## 3. Safety specification

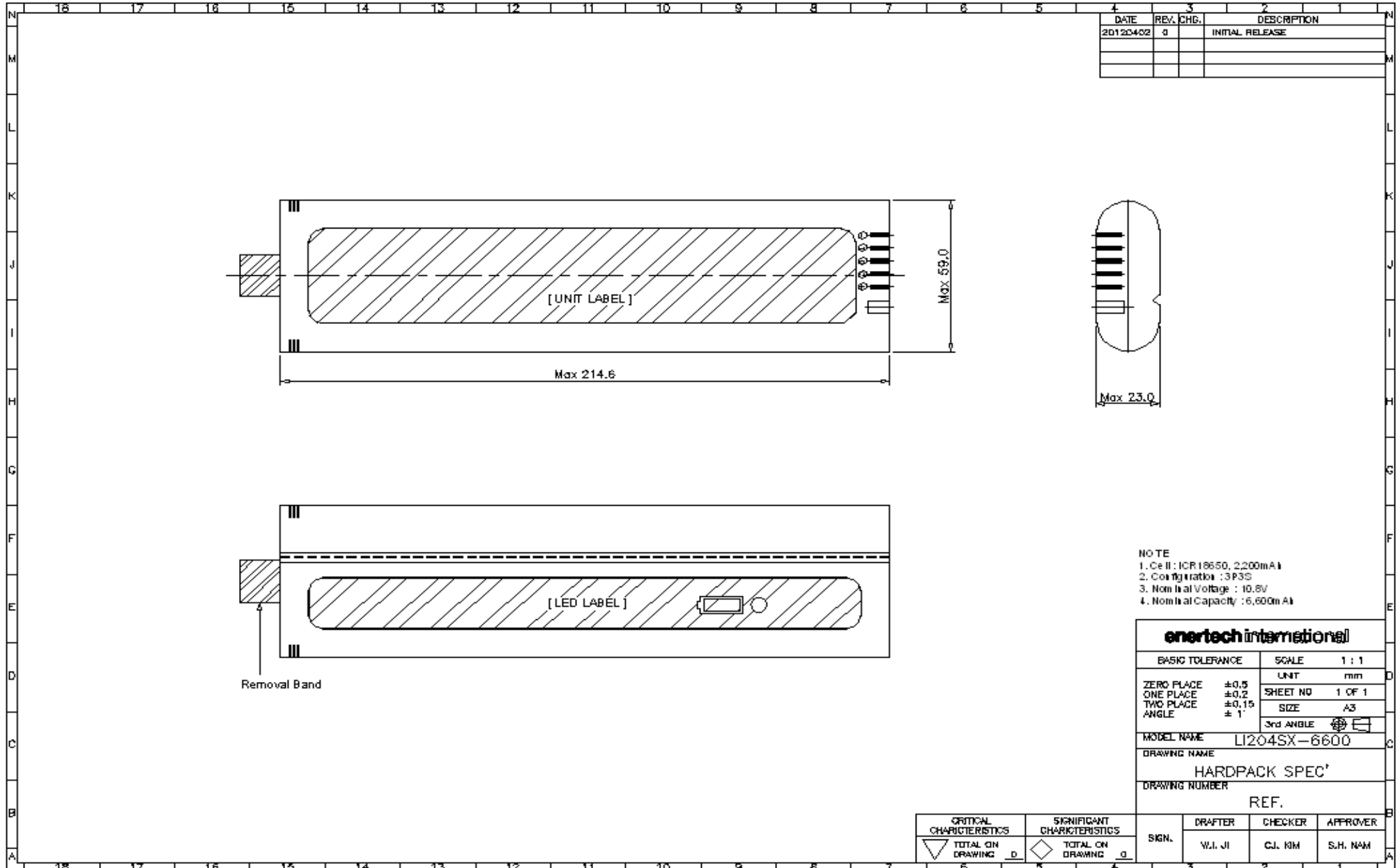
Item	Remarks	Specification
3.1 Over charge	Prohibition	4.35±0.05V/Cell
	Release	4.05±0.1V/Cell
	Delay time	<1.0 sec
3.2 Over discharge	Prohibition	2.40±0.08V/Cell
	Release	2.70±0.1V/Cell
	Delay time	<1.0 sec
3.3 Over current	Prohibition	7.5 ~ 13.5A (Depend on cell voltage)
	Release	by charging
3.4 Power dissipation	Operating	< 300uA
	Shut down	< 30uA

## 4. Physical specification

Item	Remarks	Specification
3.1 Dimension	L x W x H	Max 214.6 x Max 59.0 x Max 23.0
3.2 Terminal (Output)		Power(+),Clock(C),Data(D),Thermistor(T),Power(-)
3.3 Weight		< 500g

## 5. Certification : UL (No. : E225922)

This drawing is property of Enertech International, Inc. Use or copy of this drawing without proper permission from the appropriate technical-document managing department is prohibited.



DATE	REV. CHG.	DESCRIPTION
20120402	0	INITIAL RELEASE

- NOTE
1. Cell : ICR18650, 2200mAh
  2. Configuration : 3P3S
  3. Nominal Voltage : 10.8V
  4. Nominal Capacity : 6,600mAh

<b>enertech international</b>			
BASIC TOLERANCE	SCALE	1 : 1	
ZERO PLACE ±0,5	UNIT	mm	
ONE PLACE ±0,2	SHEET NO	1 OF 1	
TWO PLACE ±0,15	SIZE	A3	
ANGLE ± 1°	3rd ANGLE		
MODEL NAME	Li204SX-6600		
DRAWING NAME	HARDPACK SPEC'		
DRAWING NUMBER	REF.		
SIGN.	DRAFTER	CHECKER	APPROVER
	W.J. JI	C.J. RM	S.H. NAM
CRITICAL CHARACTERISTICS	SIGNIFICANT CHARACTERISTICS		
TOTAL ON DRAWING <b>d</b>	TOTAL ON DRAWING <b>a</b>		